
Deputy Jake Drive Average Daily Traffic Forecasts



MEMORANDUM

TO: Ian Pari, City of Santa Clarita

FROM: Daryl Zerfass, P.E.

DATE: September 2, 2008

SUBJECT: **DEPUTY JAKE DRIVE ADT FORECASTS**

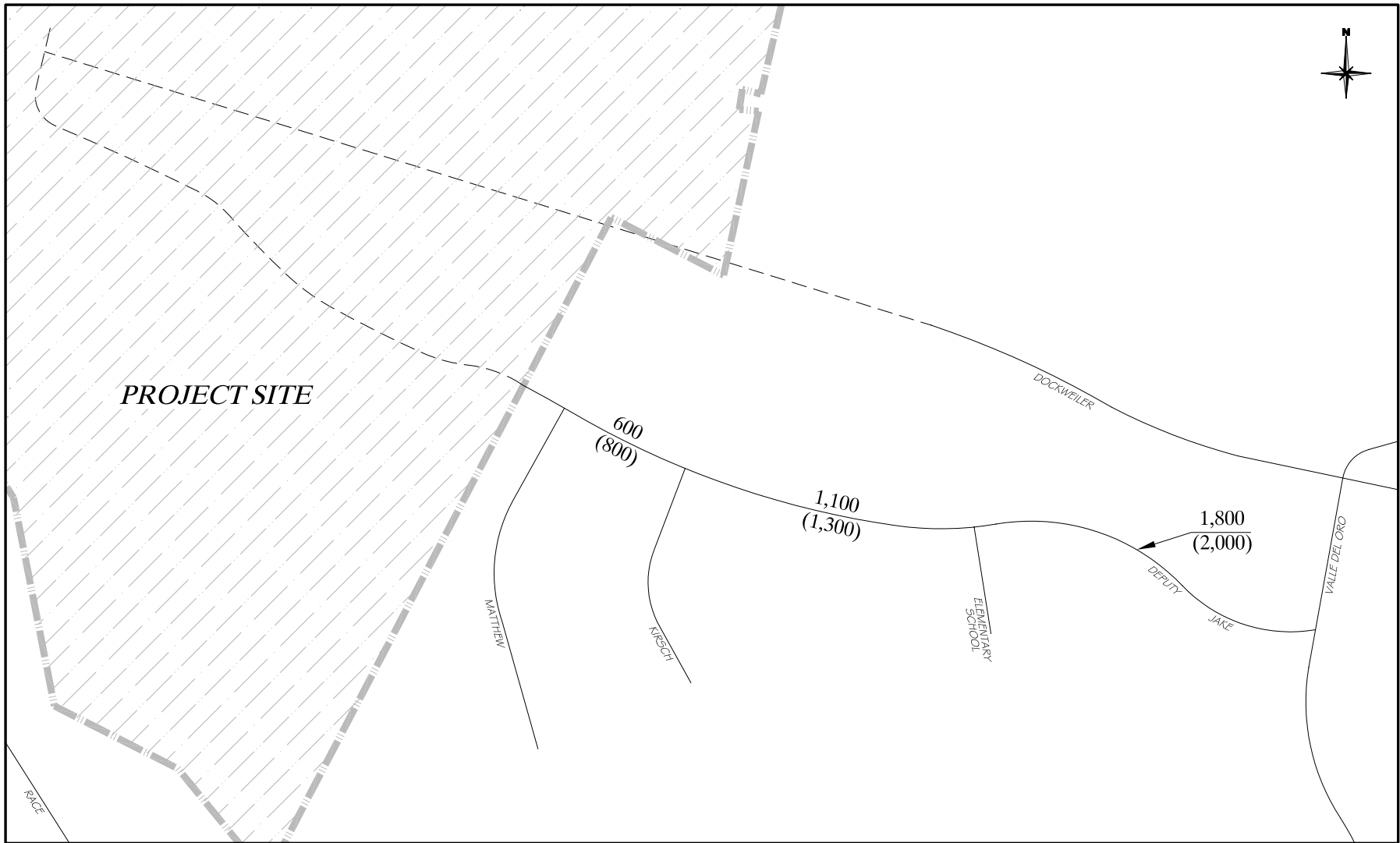
The purpose of this memo is to present data for Deputy Jake Drive in relation to the proposed Masters College Master Plan. The traffic study prepared for the Master Plan addressed the peak hour operations of the primary Deputy Jake Drive intersections, and this memo presents average daily traffic (ADT) data for the roadway.

Deputy Jake Drive provides access to the McGrath Elementary School as well as to approximately 53 single family homes, 7 of which take access directly from Deputy Jake Drive. Deputy Jake Drive would be extended west as part of the proposed Master Plan to provide access to approximately 54 new multi-family units and would intersect with a planned extension of Dockweiler Drive.

ADT traffic counts were collected in August, 2008 (while school was in session), at three locations along Deputy Jake Drive. Existing traffic volumes range from approximately 1,800 ADT between the school and Valle Del Oro, to 600 ADT between Matthew Place and Kirsch Court. When traffic forecasts for the proposed Master Plan are included, ADT volumes increase by approximately 200 ADT, as shown in the attached Figure 1. The increase in traffic is directly related to the proposed multi-family units, some of which will utilize the connection to Dockweiler Drive instead of the existing segments of Deputy Jake Drive. Non-project related cut-through traffic is not anticipated to use Deputy Jake Drive due to Dockweiler Drive providing a faster and more direct route to Valle Del Oro. Furthermore, traffic calming measures have been designed into the proposed segments of Deputy Jake Drive to minimize speeds on the roadway. With the projected increase in ADT, the volumes remain well within the acceptable conditions for the existing two-lane roadway.

Enclosure: ADT Volumes – Deputy Jake Drive with and without Project

327010mm3.doc



Legend	
1,100	Without Project Conditions (2008 Count)
(1,300)	With Project Conditions
---	New Roadway (by Project)

Figure 1
ADT VOLUMES - DEPUTY JAKE DRIVE WITH AND WITHOUT PROJECT